

## PACIFIC DAMPWOOD TERMITE *Isoptera: Hodotermitidae Zootermopsis angusticollis*

### DESCRIPTION

Winged **adults** are about 25 mm long including the wings, which are much longer than the body. The body is yellow-brown or red-brown. Wingless adults are creamy-white with brown heads. **Soldiers** are about 15 to 20 mm long with a brown head and large mandibles. There is no worker caste in this species and the immature soldiers and nymphs perform the work of the colony. **Nymphs** resemble wingless adults except they are smaller (3 to 13 mm).

### ECONOMIC IMPORTANCE

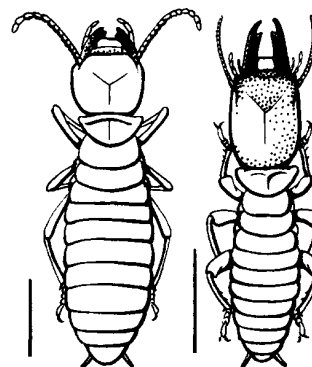
This species does not require contact with the soil, but does require wood with high moisture content. They are commonly found in fallen logs or stumps, but may invade homes where the foundation is in close contact with the soil or where waste lumber is allowed to remain near or beneath the foundation or flooring, or where the roof leaks, or other moisture problems develop.

### DISTRIBUTION AND LIFE HISTORY

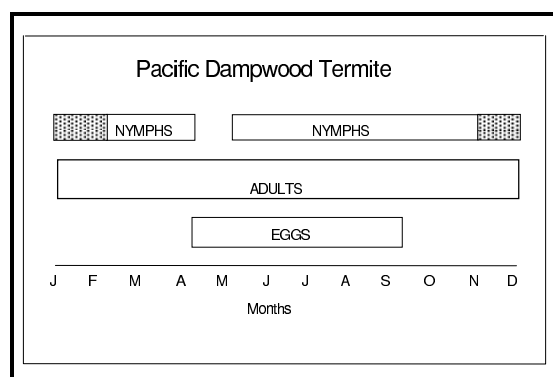
This species occurs in the western United States from British Columbia in Canada southward into southern California. Winged primary reproductives swarm on warm evenings during the fall in August, September, and early October. The colony is established slowly at first by the primary reproductives, but large colonies may be developed in two or three years. Winged reproductives are not produced until the colony is at least three years old. Winged females excavate an opening in a suitable habitat and later the male enters. After mating, these primary reproductives drop their wings, and the female begins laying eggs within 14 to 18 days. Eggs hatch in one to two weeks and the nymphs begin feeding on the wood, enlarging the cavity which will become the colony.

### MANAGEMENT AND CONTROL

Preventative measures such as construction of buildings to avoid contact with soil and removal of all waste lumber from around foundations will reduce the likelihood of infestations from this pest. Elimination of excess moisture, especially in poorly



(after Helfer)



ventilated crawl spaces, will discourage infestation. Insecticides may be used to treat wood and soil around foundations, but treatments should be applied by a licensed pesticide applicator familiar with the biology and behavior of dampwood termites.